

International Business Data

Quickly perform background checks
on any business in the world.

Index

Introduction	2
Worldwide coverage	3
Data availability	4
Freshly investigated	9
Always fresh and locally sourced	10
International scoring	11
Worldwide PLC reports	12
Real-time monitoring alerts	13
Our data delivered	14
International FAQ's	16

Introduction

This guide is designed to provide a complete overview of Creditsafe's international capabilities. By providing real-time, accurate and trusted information on any business in the world, we are able to help companies of all sizes maximise sales and reduce exposure to credit risk.

Over 500,000 users globally rely on the information we provide to make 450,000 decisions daily. For companies trading locally and globally, Creditsafe delivers key insight on over 430 million private and public companies around the world.

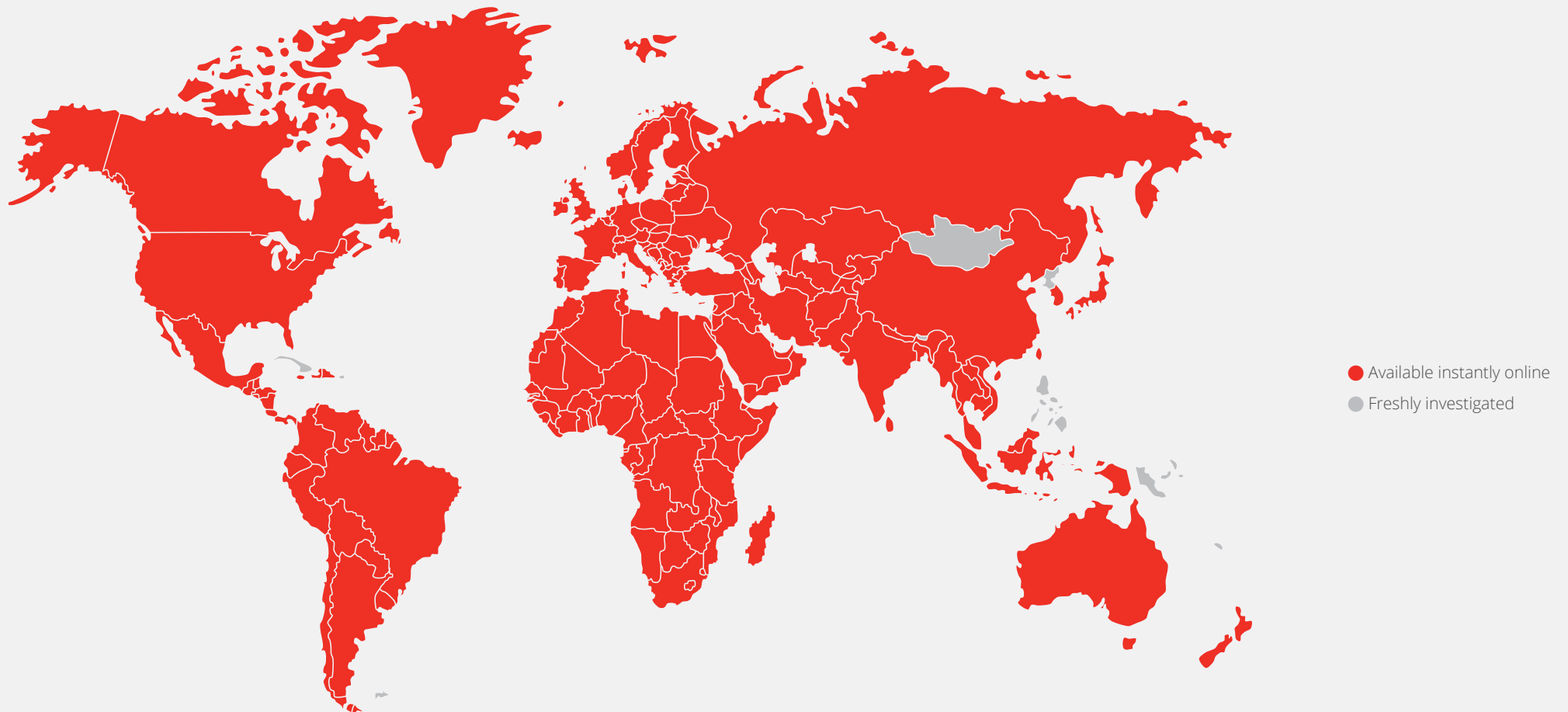
Collecting business data from all parts of the world doesn't come without its challenges. That's why our network of 26 offices and local partners from around the world allow us to collect reliable and up-to-date information, whilst benefitting from local knowledge and expertise.

While we may not hold information on every business in the world, 99.9% of all company reports requested by our customers are delivered instantly online. Unlike many of our competitors we don't store historic reports and will immediately investigate any business we don't hold information on, to deliver fresh commercial insight you can trust.

When you choose Creditsafe you choose the world's most used provider of company credit reports.

Worldwide coverage

With Creditsafe you can access a company credit report on any business in the world. The map below illustrates the 200+ countries and territories where we can deliver instant credit reports on over 430 million businesses via our online database.



Europe

Country	Instant Reports	Monitoring	Connect API	Country	Instant Reports	Monitoring	Connect API	Country	Instant Reports	Monitoring	Connect API
Åland Islands				Germany	•	•	•	Monaco			
Albania	•		•	Gibraltar				Montenegro	•	•	•
Andorra				Greece	•	•	•	Netherlands	•	•	•
Armenia	•		•	Guernsey				Norway	•	•	•
Austria	•	•	•	Holy See (Vatican City State)				Poland	•	•	•
Azerbaijan	•		•	Hungary	•	•	•	Portugal	•	•	•
Belarus	•		•	Iceland	•		•	Romania	•	•	•
Belgium	•	•	•	Ireland	•	•	•	San Marino			
Bosnia and Herzegovina	•	•	•	Isle of Man				Serbia	•	•	•
Bulgaria	•	•	•	Italy	•	•	•	Slovakia	•	•	•
Croatia	•	•	•	Jersey				Slovenia	•	•	•
Cyprus	•		•	Kosovo	•	•	•	Spain	•	•	•
Czech Republic	•	•	•	Latvia	•	•	•	Svalbard And Jan Mayen****	•		•
Denmark	•	•	•	Liechtenstein	•	•	•	Sweden	•	•	•
Estonia	•	•	•	Lithuania	•		•	Switzerland	•	•	•
Faroe Islands				Luxembourg	•	•	•	Ukraine	•	•	•
Finland	•	•	•	Macedonia	•	•	•	United Kingdom	•	•	•
France	•	•	•	Malta	•		•				
Georgia	•		•	Moldova, Republic of	•	•	•				

**** available by searching in Norway



Instant Reports

Access to company reports are available within these countries. In total there are over 430 million company reports available online.



Monitoring

Stay up to date and receive daily email alerts that detail important changes to companies within these countries.



Connect API

Integrate 200+ fields of real-time data for businesses in these countries using our fastest and most versatile API, Connect.

Americas

North

Country	Instant Reports	Monitoring	Connect API	Country	Instant Reports	Monitoring	Connect API
Anguilla				Mexico	•		•
Antigua and Barbuda	•		•	Montserrat	•		•
Aruba	•		•	Puerto Rico*	•		•
Bahamas	•		•	Saint Barthélemy	•		•
Barbados	•		•	Saint Kitts and Nevis	•		•
Bermuda	•		•	Saint Lucia	•		•
Bonaire, Sint Eustatius and Saba	•		•	Saint Martin	•		•
Canada	•	•	•	Saint Pierre and Miquelon	•		•
Cayman Islands	•		•	Saint Vincent & The Grenadines	•		•
Costa Rica				Sint Maarten			
Curaçao	•		•	South Georgia & The South Sandwich Islands			
Dominica	•		•	Trinidad and Tobago*	•		•
Dominican Republic	•		•	Turks and Caicos Islands	•		•
Greenland***	•		•	United States	•	•	•
Grenada	•		•	United States Minor Outlying Islands	•		•
Guadeloupe***	•		•	Virgin Islands, British	•		•
Haiti	•		•	Virgin Islands, US*	•		•
Jamaica	•		•				
Martinique**	•		•				

* available by searching in USA

** available by searching in France

*** available by searching in Denmark

Central & South

Country	Instant Reports	Monitoring	Connect API
Argentina	•		•
Belize	•		•
Bolivia, Plurinational state of	•		•
Brazil	•		•
Chile	•		•
Colombia	•		•
Cuba			
Ecuador	•		•
El Salvador	•		•
Falkland Islands, Malvinas			
French Guiana**	•		•
Guatemala	•		•
Guyana	•		•
Honduras	•		•
Nicaragua	•		•
Panama	•		•
Paraguay	•		•
Peru	•		•
Suriname	•		•
Uruguay	•		•
Venezuela, Bolivarian Republic of	•		•



Africa

Country				Country			
	Instant Reports	Monitoring	Connect API		Instant Reports	Monitoring	Connect API
Algeria	•		•	Mali			•
Angola	•		•	Mauritania			•
Benin	•		•	Mauritius			•
Botswana	•		•	Mayotte**			•
Burkina Faso	•		•	Morocco			•
Burundi	•		•	Mozambique			•
Cameroon	•		•	Namibia			•
Cape Verde	•		•	Niger			•
Central African Republic	•		•	Nigeria			•
Chad	•		•	Réunion**			•
Comoros				Rwanda			•
Congo	•		•	Saint Helena, Ascension and Tristan Da Cunha			•
Congo, The Democratic Republic of the	•		•	Sao Tome and Principe			•
Côte D'Ivoire	•		•	Senegal			•
Djibouti	•		•	Seychelles			•
Egypt	•		•	Sierra Leone			•
Equatorial Guinea	•		•	Somalia			•
Eritrea	•		•	South Africa			•
Ethiopia	•		•	South Sudan			•
Gabon	•		•	Sudan			•
Gambia	•		•	Swaziland			•
Ghana	•		•	Tanzania, United Republic of			•
Guinea	•		•	Togo			•
Guinea-Bissau	•		•	Tunisia			•
Kenya	•		•	Uganda			•
Lesotho	•		•	Western Sahara			•
Liberia	•		•	Zambia			•
Madagascar	•		•	Zimbabwe			•
Malawi	•		•				

** available by searching in France

Asia

Country	Instant Reports	Monitoring	Connect API	Country	Instant Reports	Monitoring	Connect API	Country	Instant Reports	Monitoring	Connect API
Afghanistan	•	•	•	Japan	•	•	•	Philippines			
Bangladesh	•		•	Kazakhstan	•		•	Russian Federation	•		•
Bhutan				Korea, Democratic People's Republic of				Singapore	•		•
Bouvet Island				Korea, Republic of	•	•	•	Sri Lanka	•		•
British Indian Ocean Territory				Kyrgyzstan	•		•	Taiwan	•		•
Brunei Darussalam				Lao People's Democratic Republic	•	•	•	Tajikistan	•		•
Cambodia	•	•	•	Macao				Thailand	•	•	•
China	•	•	•	Malaysia	•	•	•	Timor-Leste			
Christmas Island				Maldives				Turkey	•		•
Cocos (Keeling) Islands				Mongolia				Turkmenistan	•		•
Hong Kong	•		•	Myanmar	•	•	•	Uzbekistan	•		•
India	•		•	Nepal	•		•	Vietnam	•	•	•
Indonesia	•		•	Pakistan	•		•				



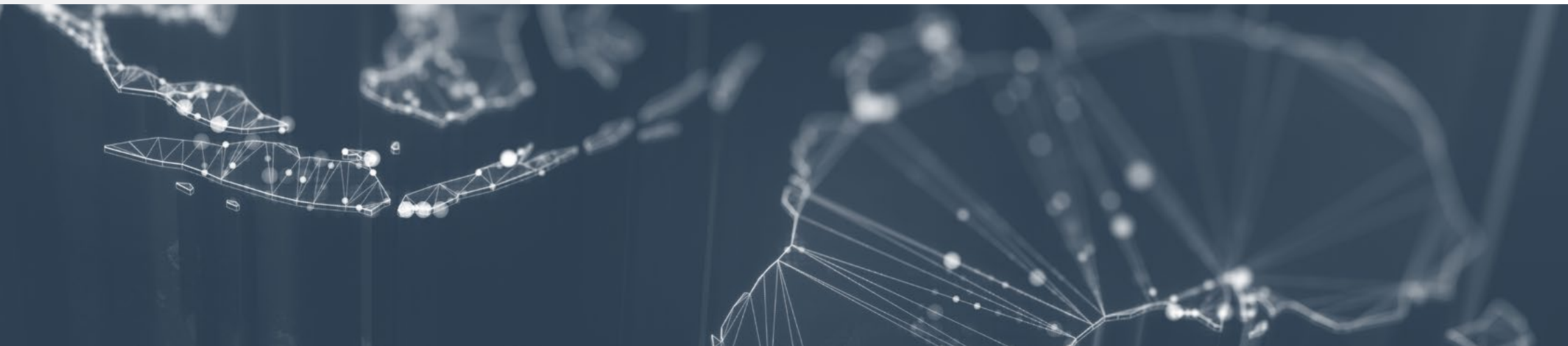
Middle East

Country	Instant Reports	Monitoring	Connect API
Bahrain	•		•
Iran, Islamic Republic of	•		•
Iraq	•		•
Israel			
Jordan	•		•
Kuwait	•		•
Lebanon	•		•
Libya	•		•
Oman	•		•
Palestinian Territory, Occupied	•		•
Qatar	•		•
Saudi Arabia	•		•
Syrian Arab Republic	•		•
United Arab Emirates	•		•
Yemen	•		•

Oceania

Country	Instant Reports	Monitoring	Connect API
American Samoa*	•		•
Australia	•		•
Cook Islands			
Fiji	•		•
French Polynesia			
Guam*	•		•
Kiribati			
Marshall Islands*	•		•
Micronesia, Federated States of*	•		•
Nauru			
New Caledonia	•		•
New Zealand	•		•
Niue			
Norfolk Island			
Northern Mariana Islands*	•		•
Palau*		•	•
Papua New Guinea			
Pitcairn			
Samoa			
Solomon Islands			
Tokelau			
Tonga			
Tuvalu			
Vanuatu			
Wallis and Futuna			
Antarctica			
French Southern Territories			
Heard Island and McDonald Islands			

* available by searching in USA



Freshly investigated whenever the need

It's not always possible to provide real-time data on every business in the world and unlike many of our competitors, we do not store outdated reports. Whenever a report is not immediately available to view online we will freshly investigate that business to deliver you up-to-date information you can trust.



Any business, anywhere:

With the need for accurate data and the speed at which it's delivered, you can now quickly perform a background check on any company that is not available within our instant online database, allowing you to carry on with your business with minimal delay.

Where do our investigations start?

Depending on the market, the information we obtain will vary. Using official sources and registries we are able to quickly answer questions about a company's stability and financial health. Where official information is not available we will conduct a direct interview with the business.



On average fresh investigations
are delivered within 5.5 days

Always fresh and locally sourced

The information that makes up an international report is collected in a number of different ways across our network of local offices and hand-picked partners. Where possible we will always collect information direct from official sources such as the domestic equivalent of Companies House, Federal and Domestic Gazettes and the Courts.

All of this information combined with data from our network of leading local credit information partners ensures the information you receive is accurate, up-to-date and always delivered with speed.

Our data is collected from 9000+ sources including:



Telephone Research



FTSE Stock



Local Agents



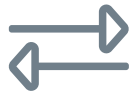
Companies House



Branches



Gazettes



Trade Payment Data



News



Banks



Directories



Courts



Registry Offices

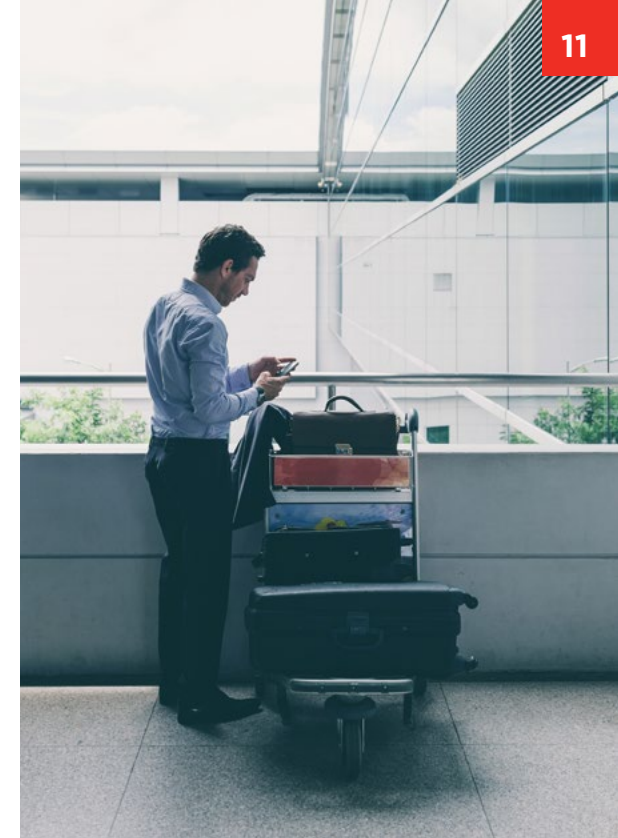
International scoring

To make things easier for you when trading internationally, we have created an international score. This allows you to compare company credit scores across the globe and have peace of mind throughout every country you trade in. By using the same scoring range and risk descriptions for all countries, we make it easy for you to compare reports. Our score is designed with simplicity, ranging from A-E, A being the lowest risk, D being the highest risk and E being unrated. It measures the likelihood of a company becoming insolvent within the next 12 months.

Score Band	Description	
A	Very Low Risk	Proceed with transaction – offer extended terms if required
B	Low Risk	Proceed with transaction
C	Moderate Risk	Proceed with caution and monitor closely
D	High Risk	Request assurances before extending credit in the form of personal guarantees
E	Not Scored	Insufficient information to assign a risk score

What factors affect the Creditsafe International Score?

The factors that affect the score differ by country. Different scorecards have been created for each country using statistical research that has identified factors that are proven to predict business failures ensuring you receive an accurate and up-to-date credit risk assessment.



Typical factors that are used in these scorecards are:

- Key information from financial statements
- Court Judgment data
- Protested bills
- Industry code and analysis
- Demographic information
- Age and legal form of the business
- Related business that have failed or have the same director
- Supplier payment history



Worldwide PLC reports

Creditsafe worldwide PLC reports provide in-depth commercial credit and financial insight into all publicly trading companies. Worldwide PLC reports are available to view instantly online and contain key information on more than 70,000 active public companies in over 165 countries globally, plus hard-to-find historical information on all non-trading companies.

Creditsafe worldwide PLC reports include:

- Fully verified company name, address and contact details
- Principal trading activity description
- Full shareholder and ownership details
- A clear and concise credit score and maximum credit limit
- Geographical sales & revenue breakdown
- Key competitor information
- Full and interim financial statements
- Sales, profit and loss accounts
- Balance sheets and cash flow
- Key accounting ratios
- Current & previous directors
- Holding & subsidiary details
- Corporate linkages

Real-time monitoring alerts

Our business data is refreshed 5 million times a day from local sources, giving us visibility of the thousands of new business events that occur every day. Changes to your own customers and suppliers continually pose new risks or opportunities to your company, but these need to be identified before it is too late.

Creditsafe Monitoring helps you to keep on top of these changes without having to manually check each company's report. Add any business of interest to you to Monitoring, and we will email you whenever there is a noteworthy change. Spot the first signs of risk or take advantage of new opportunities when it matters the most. Whether your customer changes their invoicing address or their credit score decreases, you can customise alerts for a wide range of important company events.



Where can I monitor businesses?

We are continually expanding the regions that you can monitor businesses in. Monitoring currently covers 47 countries, all of which you can find in the tables on pages 4 - 8.

What events can I monitor?

Monitoring covers numerous event types, which can be summarised under 8 main event type categories:

- Company Registration Details
- Company Status
- Credit Score
- Credit Limit
- Payment Behaviour
- Director Details
- Company Financials
- Negative Information

Due to the differences in filing requirements and the availability of data in each country, the event types available vary across the different geographies.



Our data delivered in a way that suits you

No matter how your business operates, we offer a number of ways for you to access our data. Whether you want the freedom to automate your credit and lending decisions, or simply want to view entire reports on the web, we can tailor our services to suit your business.

Our most popular options include:

Connect API

Integrate your internal systems with Connect API and gain the freedom to use Creditsafe's business data in any way you need it. We put real-time company data at the fingertips of your workforce, empowering them to make quick and informed decisions that help your business to thrive. Build new features and intelligent automated workflows with data your business can trust.

Apps

Integrating Creditsafe data with your CRM system couldn't be easier with our pre-built apps for Salesforce, Sage, SugarCRM, SAP, Microsoft Dynamics and more. Creditsafe's apps remove the need to manually input and update customer information, saving precious time and resources. Instant record creation and refresh options mean your records are always accurate and dependable.

Website

Every company report available in the Creditsafe database can be accessed via our website. With both simple and advanced search options, you can easily find a company report and reach the information you need quickly. Our website access also gives you access to popular Creditsafe services including Monitoring and Fresh Investigations.

Bulk & Bespoke Data

Streamline the data you receive with a bespoke data file that is built around your business. With hundreds of fields to choose from to support all aspects of your business, we design your data file to suit your individual needs. Receive your file securely in a format of your choice, on a daily, weekly, monthly or quarterly basis.



99.9% of requested reports
are delivered instantly
online



We can deliver business
reports from any country
around the world



Our database holds instant
reports for companies in over
200+ countries and territories



On average we deliver
Fresh Investigations faster
than our competitors



60% of reports viewed
contain unique trade
payment data



40% of our customers
use our international
reports



International FAQ's

Q: What information does a international report include as standard?

A: Our international reports include most of the information you would expect to find in a local report, however not all countries have an equivalent to Companies House in the UK. We sometimes need to gather information from other local sources so the information may vary country by country.

Q: Where do you get your data from for an online international credit report?

A: Our data is collected from over 9,000 sources; where possible we will collect information from official registries similar to Companies House. Our network of 26 offices and trusted local partners allow us to collect information locally; ensuring we always deliver quality, fresh information.

Q: How does a fresh investigation work?

A: When a company report is not available to view online you have the opportunity to freshly investigate a business. Once this request is received we will attempt to contact the company directly using our network of local partners and official registries to provide a detailed report within as little as 2-10 working days.

Q: Why can't I find a particular company?

A: The information we hold is LIVE therefore it's not always possible to keep up-to-date information on every business. If you cannot find a company on our live database we will freshly investigate that company to provide you with a detailed, up-to-date report within 2-10 working days.

Q: How long will it take to receive my report?

A: 99.9% of all reports requested by our customers are typically delivered instantly online. Where a company is not available a fresh investigation will take between 2-10 working days depending on the country.

Q: How often are the reports updated?

A: Creditsafe international database reports are updated in real-time, over 1 million times a day.

Q: Why are the credit scores banded A to E, rather than 1-100?

A: Because not all countries use a 1-100 score; using an A-E score makes it easier for you to compare the credit risk of companies from across different countries. A is the lowest risk, D the highest risk and E is not scored.

Q: Why do some companies not have a score?

A: Some companies aren't scored because in certain countries we rely on local suppliers and they may have insufficient information about the company to calculate a reliable score. Other reasons could be the company is late in filing its financial statement, the company is already involved in insolvency proceedings or the company is inactive or dissolved. Where possible we will always provide a company score.

Q: Can I get more information if needed?

A: Where possible we can freshly investigate a company to provide an accurate and detailed credit risk assessment.

Q: Why would some reports be missing financial information?

A: Every country has different filing laws and some countries do not require companies to file accounts so it may not be possible to provide financial information on companies in certain countries. Where possible we will always provide detailed financials for a company in any country if the information is accessible.

Q: Are searches anonymous, or do they leave a footprint?

A: All business searches are anonymous and do not leave a footprint.

Q: Do you have director information for all countries?

A: Although we hold details on millions of company directors worldwide, sometimes it is not possible to provide details of a director or senior executive due to local data privacy regulations.

Q: Why don't some reports contain payment information?

A: Typically, 60% of reports accessed online contain supplier payment information. Due to the fact payment information is collected directly from suppliers it is not always possible to collect payment data on every business.

Q: Is there an additional cost for international credit reports?

A: Most packages include access to some international reports as standard. Please check with your account manager or sales representative about the details of your package.

A word from our customers

★★★★★

Fast and efficient service

Dealt with Creditsafe for many years - I use your system about 3 times a week or when new customers approach us - as a manufacturing unit we need to have a fast service as some of our orders are very last minute, found the customer service to be very responsive and helpful. This week I needed an International report for a large petrochemical company in Kuwait - had the report back within 3 days - that's what I call service.

★★★★★

Our relationship manager is...

Our relationship manager is approachable and always keen to meet for review or to introduce new products/services. The information presented on the Creditsafe web page is clear and easy to read, the international scope of data help to do a more thorough research.





A great partner to have

Having worked in a department that requires near-constant access to up-to-date credit reporting, I have found Creditsafe to be a fantastic company to work with. Our Account Manager was always happy to accommodate our requests when they were slightly less than usual, and the International Reports team were always fantastic at further explaining the reasoning for reduced credit scores.



Fantastic international coverage

Fantastic international coverage, consistent and excellent reports
All topped up with a first class service.

For more reviews visit [Trustpilot](#)





Creditsafe Austria

Creditsafe Österreich GmbH
Jasomirgottstr 6/2
1010 Vienna

GraydonCreditsafe Belgium

Steenweg op Zellik 12, 1082 Brussel
0032 (0)2 481 88 60
info@creditsafe.be
www.creditsafe.com/be

Creditsafe Canada

77 City Centre Drive W Tower Suite 300,
Mississauga, Ontario, L5B 1M5
(+1)888-918-0152
info@creditsafe.ca
www.creditsafe.com/ca

Creditsafe Denmark

Strandvejen 125,
2900 Hellerup
8082 0588
info@creditsafe.dk
www.creditsafe.com/dk

Creditsafe France

122 rue de Tourcoing, 59100 Roubaix
0 810 600 397
contact@creditsafe.fr
www.creditsafe.com/fr

Creditsafe Germany

Schreiberhauer Straße 30, 10317 Berlin
030 - 473 929 000
info@creditsafede.com
www.creditsafe.com/de

Creditsafe Ireland

Unit 1 H, Block 71, The Plaza,
Parkwest Facilities Complex,
Nangor Road, Dublin 12, Ireland
01 898 3200
info@creditsafe.ie
www.creditsafe.com/ie

Creditsafe Italy

Creditsafe Italia SRL, Via Pantano 2, 20122
Milano
011/19 46 46 00
italiainfo@creditsafe.it
www.creditsafe.com/it

Creditsafe Japan

1-8, Kamigofuku-machi, Hakata-ku,
Fukuoka-shi Japan
03-5797-7376
info@creditsafe.co.jp
www.creditsafe.com/jp

GraydonCreditsafe Luxembourg

6, rue Jean Monnet
L-2180
Luxembourg
info@graydoncreditsafe.lu

GraydonCreditsafe Netherlands

Jan Pietersz. Coenstraat 10, 2595 WP Den Haag
070-38 44 600
info@creditsafe.nl
www.creditsafe.com/nl

Creditsafe Norway

Østerdalsgata 1, 0658 Oslo,
Norway
800 24 722
info@creditsafe.no
www.creditsafe.com/no

Creditsafe Sweden

Creditsafe i Sverige AB,
Box 320,
401 25 Göteborg
031-725 50 00
info@creditsafe.se
www.creditsafe.com/se

Creditsafe UK

Bryn House, Caerphilly Business Park,
Van Road, Caerphilly, CF83 3GR
Head Office - 02920 886 500
London Office - 0203 626 0062
help@creditsafeuk.com
www.creditsafe.com/gb

Creditsafe USA

4635 Crackersport Rd, Allentown, PA 18104
(855)551-6903
uspainfo@creditsafe.com
www.creditsafe.com/us